

Sound Cards

(copied from the Matlab Help on the Data Acquisition Toolbox)

You can verify that your sound card is functioning properly by recording data and then playing back the recorded data. Recording data uses the sound card's analog input subsystem, while playing back data uses the sound card's analog output subsystem. Successful completion of these two tasks indicates your sound card works properly. The data to be recorded can come from two sources:

- A microphone
- A CD player

The first thing you should do is enable your sound card's ability to record and play data. This is done using the Microsoft Windows Sounds and Audio Devices Properties dialog box. You can access this dialog box using the Windows **Start** button.

Select **Start > Settings > Control Panel**, then double-click **Sounds and Audio Devices**.

The Sounds and Audio Devices Properties dialog box is shown below, and is configured for both playback and recording.



You can record data and then play it back using the Windows **Sound Recorder** panel. To access this application, select the following:

Start > Programs > Accessories > Entertainment > Sound Recorder

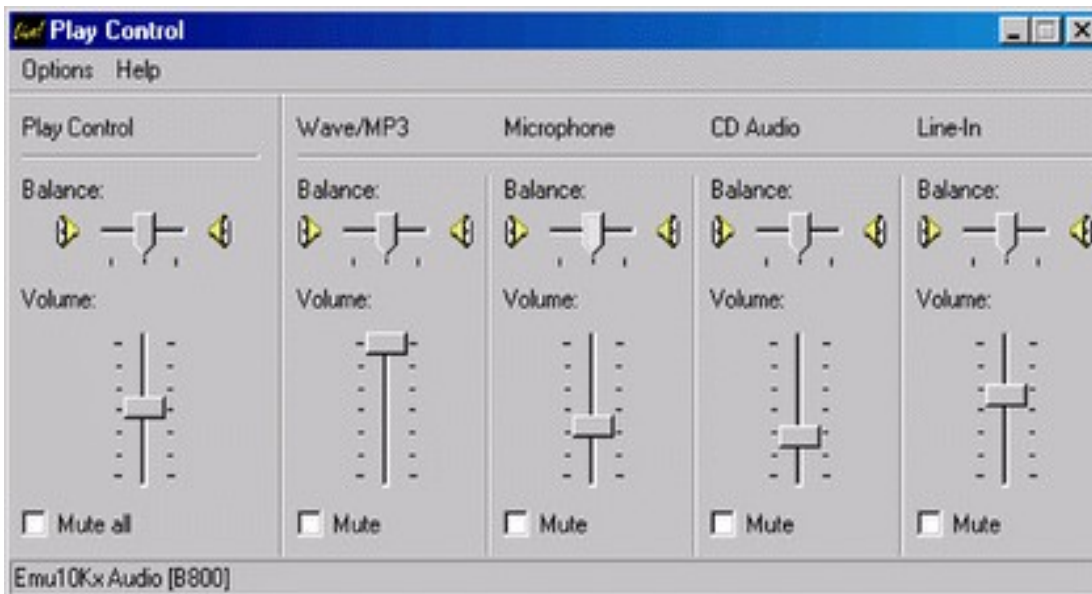
The figure below shows how to record and play data.



You must also make sure that your microphone or CD player is enabled for recording and playback using the Windows **Volume Control** panel. To access this application:

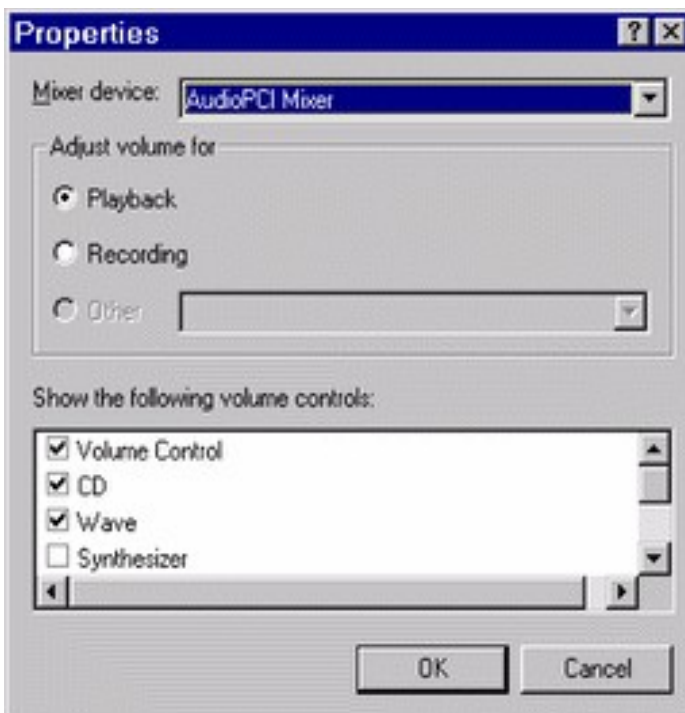
Start > Programs > Accessories > Entertainment > Volume Control

The **Volume Control** panel is shown below. The CD, microphone, and line devices are enabled for playback when the **Mute** check box is cleared for the **CD**, **Microphone**, and **Line** volume controls, respectively. You can play .WAV files by leaving the **Mute** check box cleared for the **Wave** volume control.

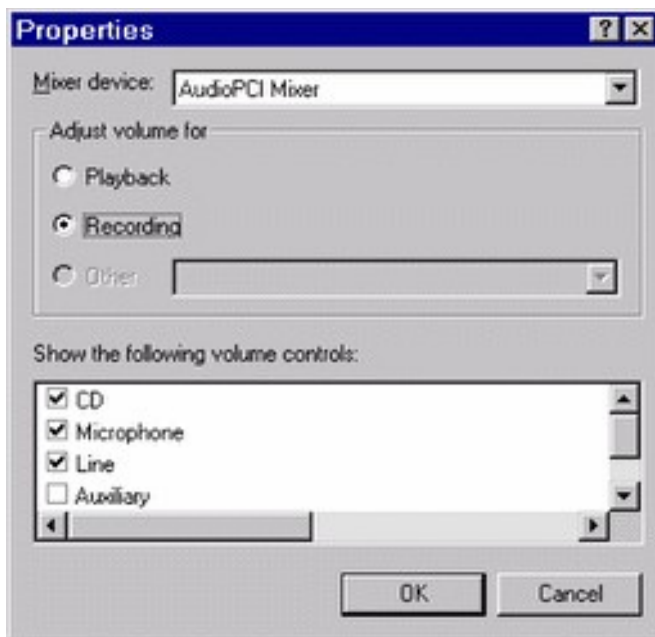


If the CD, microphone, or Wave Output controls do not appear in the **Volume Control** panel, you must modify the playback properties by selecting **Properties** from the **Options** menu.

The Properties dialog box is shown below for playback devices. Select the appropriate device check box to enable playback.



To verify if the CD and microphone are enabled for recording, click the **Recording** option in the Properties dialog box, and then select the appropriate device check box to enable recording. The Properties dialog box is shown below for recording devices.



The **Recording Control** panel is shown below. You enable the CD or microphone for recording when the **Select** check box is selected for the **CD** or **Microphone** controls, respectively.

